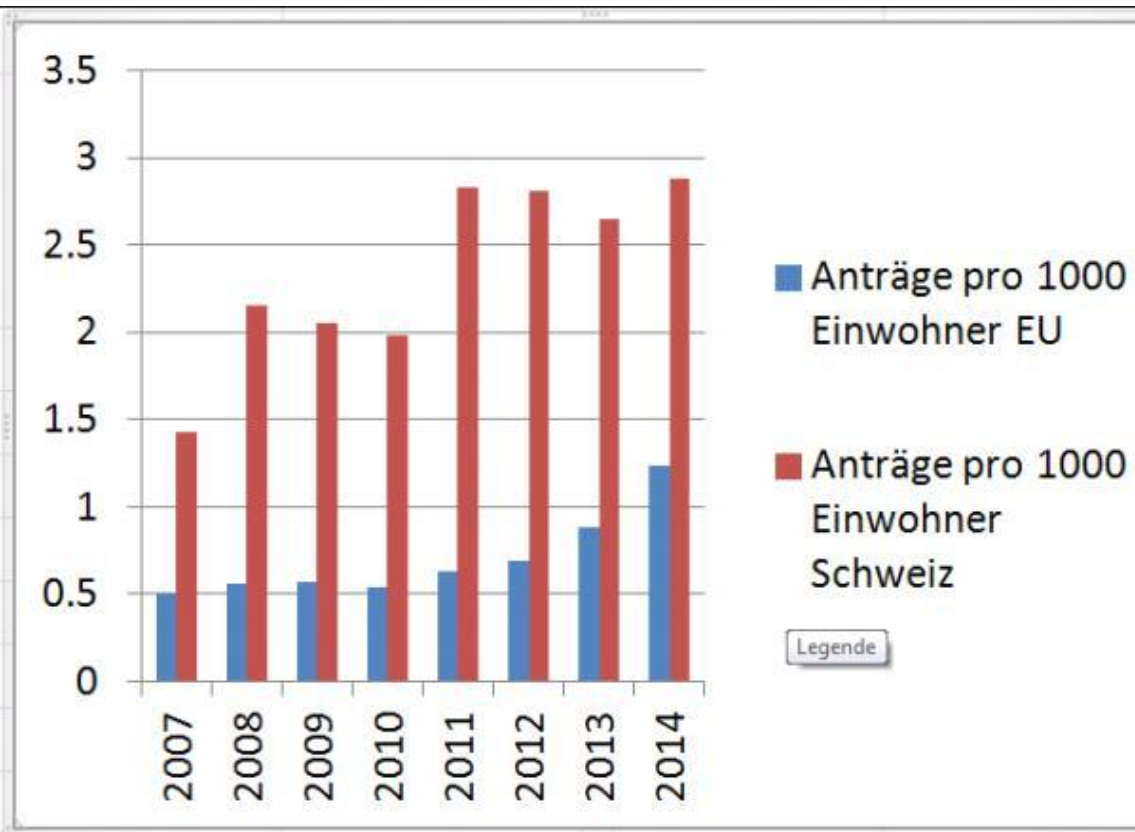


| 14mehr als07 | 101.807749 | 108.469085 |
|--------------|--|---|
| | Anträge pro 1000 Einwohner EU | Anträge pro 1000 Einwohner Schweiz |
| 2007 | 0.50165125 | 1.42806348 |
| 2008 | 0.55784341 | 2.15609135 |
| 2009 | 0.5721241 | 2.05566544 |
| 2010 | 0.54126108 | 1.97799266 |
| 2011 | 0.63516912 | 2.83492778 |
| 2012 | 0.69544175 | 2.81494104 |
| 2013 | 0.87867582 | 2.64939309 |
| 2014 | 1.23196957 | 2.88529248 |



| | EW EU | EW CH | Anträge EU | Anträge CH | Ant/t.EW EU | Ant/t.EW CH |
|------|-----------|---------|------------|------------|-------------|-------------|
| 2007 | 498410000 | 7593500 | 250028 | 10844 | 0.50165125 | 1.42806348 |
| 2008 | 500420000 | 7701900 | 279156 | 16606 | 0.55784341 | 2.15609135 |
| 2009 | 502190000 | 7785800 | 287315 | 16005 | 0.5721241 | 2.05566544 |
| 2010 | 503380000 | 7870100 | 272460 | 15567 | 0.54126108 | 1.97799266 |
| 2011 | 504960000 | 7954700 | 320735 | 22551 | 0.63516912 | 2.83492778 |
| 2012 | 504580000 | 8039600 | 350906 | 22631 | 0.69544175 | 2.81494104 |
| 2013 | 505670000 | 8139600 | 444320 | 21565 | 0.87867582 | 2.64939309 |
| 2014 | 507420000 | 8236600 | 625126 | 23765 | 1.23196957 | 2.88529248 |